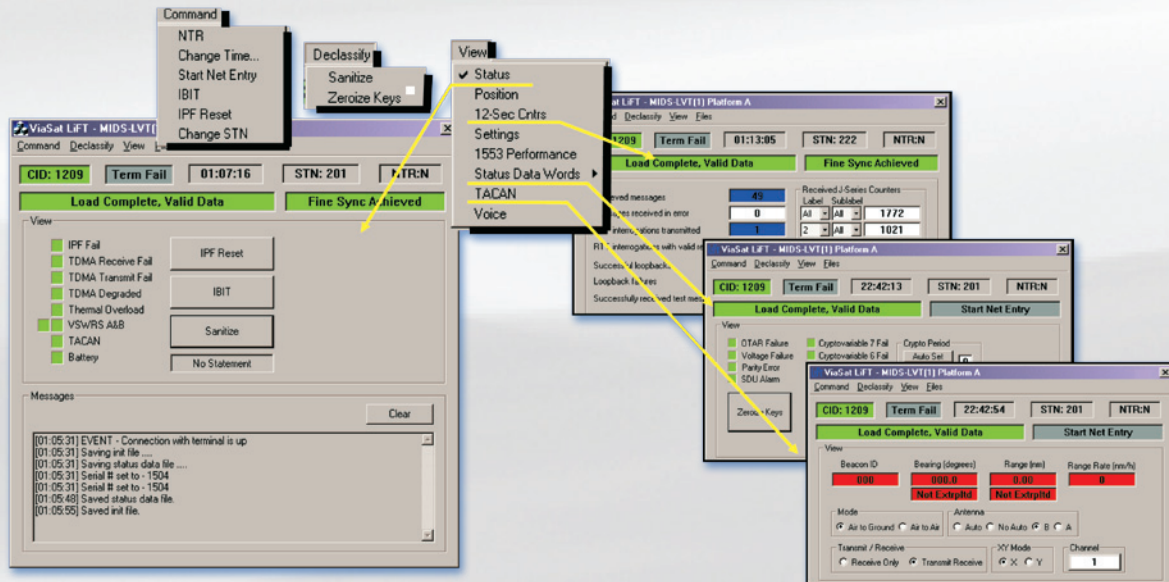


"GO/NO-GO" TESTING & TROUBLESHOOTING SOFTWARE

When the GUI is set to Menu, commands and displays are exercised through a menu structure.



ViaSat's Link 16 Flight-line Tool (LiFT) software is designed to support "go/no-go" testing and troubleshooting of Multifunctional Information Distribution System Low Volume Terminals (MIDS-LVT) in a field environment. The LiFT application is available installed on a Tablet PC or as a software package for customers who want to install the LiFT application on their own equipment, such as the GoBook 3.

This software is intended for use by technicians and allows the user to read, reconfigure, update, and monitor terminal parameters. Data is provided in dynamic graphical displays.

INTERFACES

Interfaces implemented in LiFT are the MIDS-LVT(1) Platform A and Platform I MIL-STD-1553 interfaces, the Platform D and Platform J Ethernet interfaces, and the Ethernet Support Port. The application uses the same terminal interface software employed by ViaSat's Link 16 Environment Gateway Stimulator (LEGS™) software.

USER-CONFIGURED GUI

To support different user preferences, the application software may be configured at bootup for either a menu-driven GUI or a touch-screen push-button GUI.

TERMINAL INITIALIZATION AND STATUS DATA

Although LiFT is a standalone application, it may be used in conjunction with LEGS software. When LiFT first connects to a terminal, it saves a copy of the current initialization data and the current terminal status data.

The initialization data is formatted in the .lif format employed by LEGS. The Link 16 Initialization File Editor (LIFE) provided with LEGS is required to create or view this initialization data. An Init Converter utility also provided with LEGS converts between the .lif format and standard formats distributed by the Network Design Facilities.

TERMINAL CONTROL ON THE FLIGHTLINE

LiFT SUPPORTS THE FOLLOWING FUNCTIONS:

- » Obtain Terminal Status
 - IPF Fail, TDMA Rcv/Tx Fail, TDMA Degraded, Thermal Overload and Sanitization Confirmation
- » Initiate Built-In Test (IBIT)
- » View SDU Alert Status
- » View Position Data
- » View Cockpit ID
- » Modify a Limited Number of Settings
 - Set/Change CCPD
 - Set/Change STN
 - Set/Change NTR
 - Set/Change Time
 - Set/Change Tx Mode
 - Set/Change Output Power Mode
 - Set/Change TACAN Settings
 - Set/Change Voice Channel
- » Load an Initialization File
- » Start Net Entry
- » Participate in a Network
- » View 12-Sec Counters
- » Observe received RF Messages by Type
- » Exercise TACAN Function
- » Sanitize Terminal for Shipment

VERIFY TACTICAL MESSAGE EXCHANGES

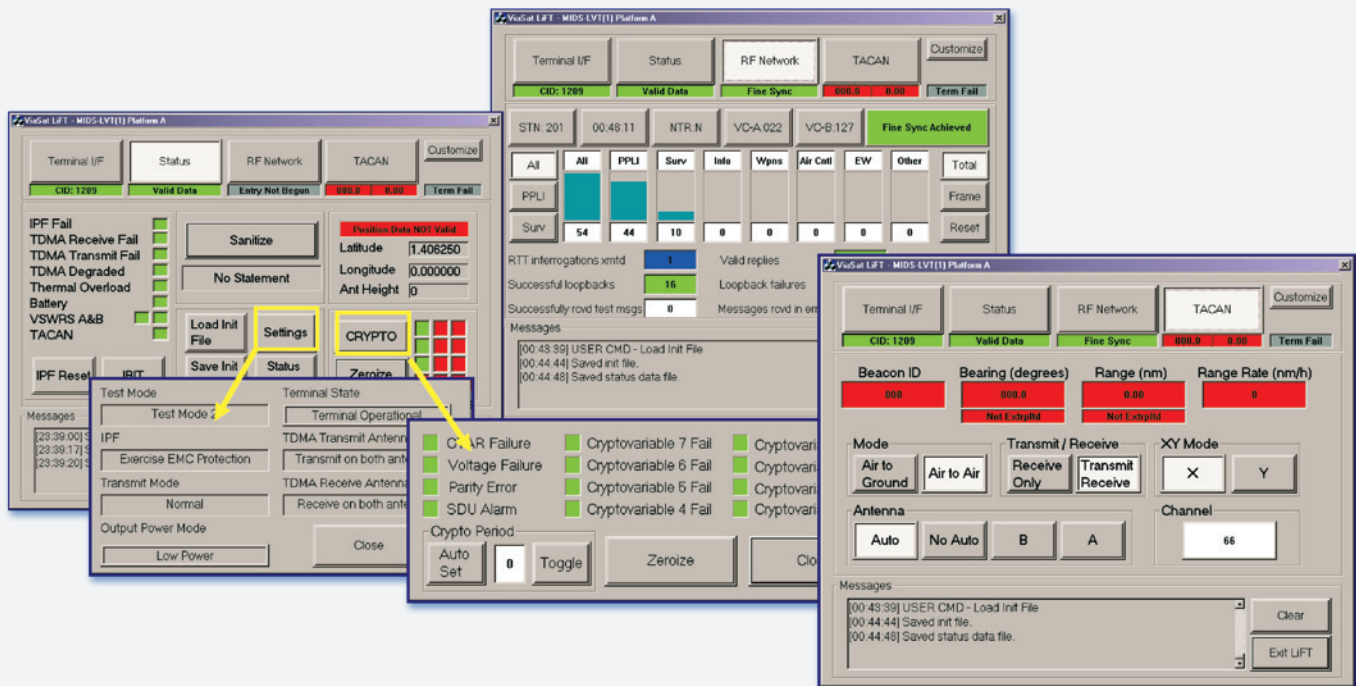
The LiFT operator can initialize the terminal, set time, start net entry, initiate BIT, participate in a network, and observe counts of the different types of J-series messages received. LiFT allows thorough check-out of the terminal while preventing access to sensitive settings and functions. It is used by aircraft integrators to verify proper terminal installation.

RECORD OF OPERATOR ACTIONS

Indicators are employed to assist the user in interpreting information displayed, with green indicating normal settings and red indicating a possible error condition. All operator actions are displayed on the screen and recorded in a log file.

LiFT TOUCH SCREEN

When the GUI is set to Touch Screen, commands and displays are organized into functional groups based on Terminal Interface, Status, RF Network, and TACAN.



ORDERING INFORMATION LiFT

Type	ViaSat PN
LiFT Handheld KIT (LiFT software installed on a handheld PC with DDC 1553 PCMCIA card)	1043057
LiFT Software License with CD for installation on CFE	1043058
LiFT Software License with CD plus DDC 1553 PCMCIA Card	1043061
Complete LiFT Kit for installation on the EDNA Viper Gobook3 (Software License, CD, DDC Card, F-16 MLV Cable)	1043059
F-16-MLV Cable only	1043060

CONTACT

VIASAT, INC., 6155 EL CAMINO REAL, CARLSBAD, CA 92009

US SALES
TEL 760.795.6334 EMAIL MIDS.US@VIASAT.COM

INTERNATIONAL SALES
TEL +1.760.476.2675 EMAIL MIDS.INTERNATIONAL@VIASAT.COM

TECHNICAL SUPPORT
TEL 866.MIDSLVT FAX 760.795.1045 EMAIL LEGS@VIASAT.COM WEB WWW.VIASAT.COM/MIDS

Copyright © 2007-2011 ViaSat, Inc. All rights reserved. ViaSat and the ViaSat logo are registered trademarks of ViaSat, Inc. LEGS and LiFT are trademark of ViaSat, Inc. All other trademarks mentioned are the sole property of their respective companies. Specifications and product availability are subject to change without notice. 110802-024

PRELIMINARY

ViaSat